

8

7

6

5

4

3

2

1

NOTE: THIS DRAWING WAS PRODUCED BY COMPUTER, DO NOT UPDATE MANUALLY

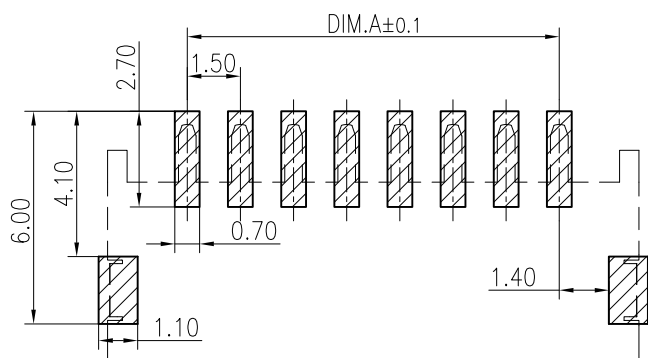
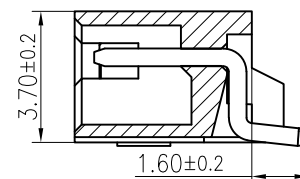
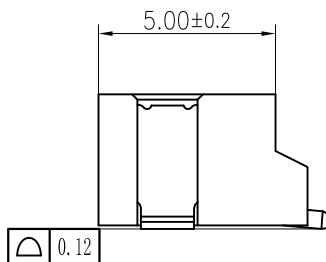
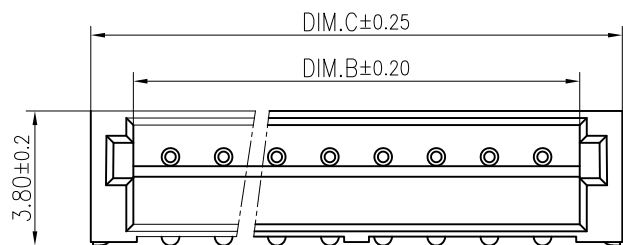
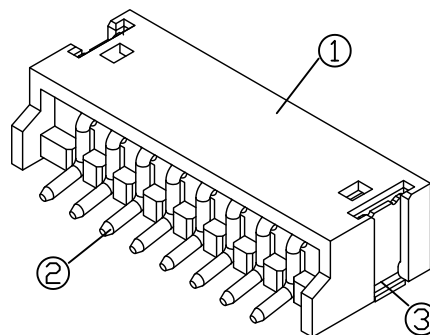
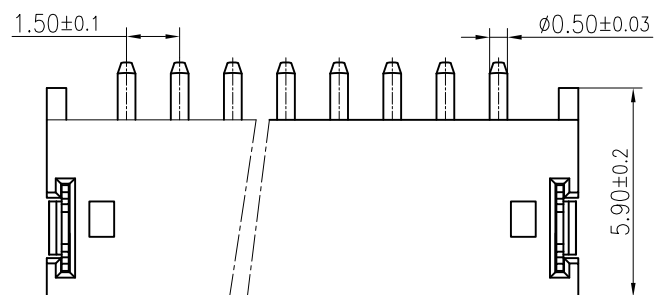
REV.	ECN NO.	DESCRIPTION	DESIGN	DATE
A0		新版发行	林飞	2017.09.15

TABLE:

Circuits	Dimensions (mm)		
	DIM. A	DIM. B	DIM. C
02	1.50	3.60	6.00
03	3.00	5.10	7.50
04	4.50	6.60	9.00
05	6.00	8.10	10.50
06	7.50	9.60	12.00
07	9.00	11.10	13.50
08	10.50	12.60	15.00
09	12.00	14.10	16.50
10	13.50	15.60	18.00
11	15.00	17.10	19.50
12	16.50	18.60	21.00
13	18.00	20.10	22.50
14	19.50	21.60	24.00
...
20	28.50	30.60	33.00

技术要求:

- 1、塑件材料: LCP (UL-94V-0)
- 2、接触件: 黄铜镀锡
- 3、接触电阻: $\leq 20m\Omega$
- 4、绝缘电阻: $\geq 500M\Omega$
- 5、额定电压: 125V AC DC
- 6、额定电流: 1.0A AC DC
- 7、耐压: 能承受500V AC/Minute
- 8、工作温度: $-25^{\circ}\sim+85^{\circ}$
- 9、可焊性试验: 浸锡面积 $\geq 95\%$ 温度 $245\pm 5^{\circ}C$,时间 2 ± 0.5 秒
- 10、铅和镉等六大有害物质含量要符合环保要求




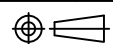
料号说明

TJ-27 XX SN719-R

Poles: 02~20

序号	名称	材料	数量	附注
3	Fitting Nail	Brass	2	电镀(锡): 整个表面镀底镍30U"MIN, 再镀锡80U"MIN
2	Contact	Brass	n*1	电镀(锡): 整个表面镀底镍30U"MIN, 再镀锡80U"MIN
1	Wafer	LCP(UL94V-0)	1	本色

SUGGESTED PCB LAYOUT
(COMPONENT SIDE)

GENERAL TOLERANCE		日期	2020.08.17	UNITS	SCALE	 Alinta Electronics Co., Ltd.		
X.	±0.50	X*.	±5°	mm	1:1			
.X	±0.30	.X*	±2°	REV.	SHEET			
.XX	±0.25	.XX*	±1°	A0	1/1			
		核准		SIZE	C	品名:	A150-SMT-nAW卧贴针座系列	
		审核		A4		料号:	见料号说明	图号: DWG-TJ-719
		制图	张媛婉					

F

E

D

C

B

A